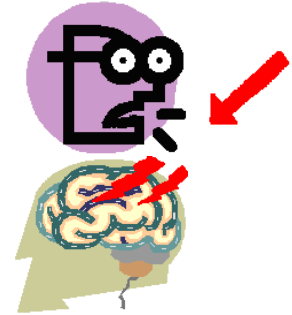
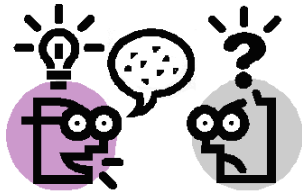


# APHASI

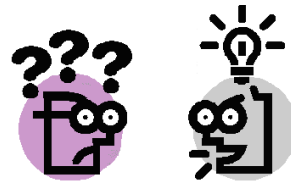
Aphasi se youn pwablem de pale  
apre youn "stroke" ou mal kou de tèt.



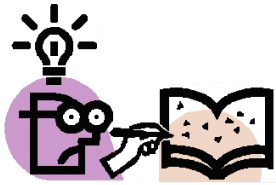
## Aphasi ka fe pwablem yo de



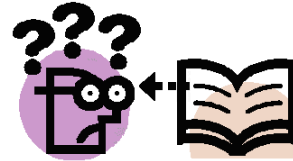
pale



koute



ekri



li

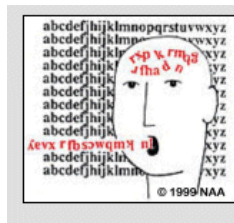
## Gen ede!



terapyoute



gwoup



**aphasia**  
NATIONAL  
APHASIA  
ASSOCIATION

[http://www.aphasia.org/naa\\_materials/aphasia\\_in\\_creole.html](http://www.aphasia.org/naa_materials/aphasia_in_creole.html)