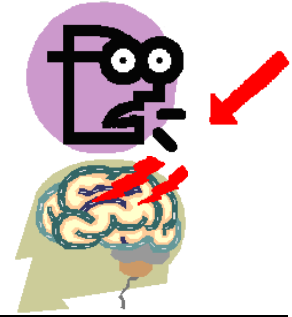
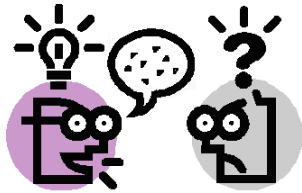


APHASI

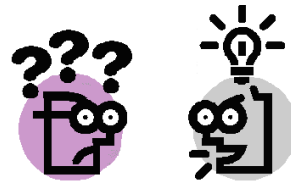
Aphasi se youn pwablem de pale
apre youn "stroke" ou mal kou de tèt.



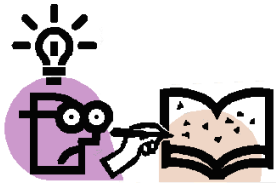
Aphasi ka fe pwablem yo de



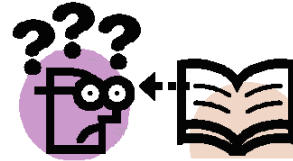
pale



koute



ekri



li

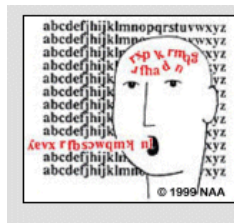
Gen ede!



terapyoute



gwoup



aphasia
NATIONAL
APHASIA
ASSOCIATION

http://www.aphasia.org/naa_materials/aphasia_in_creole.html